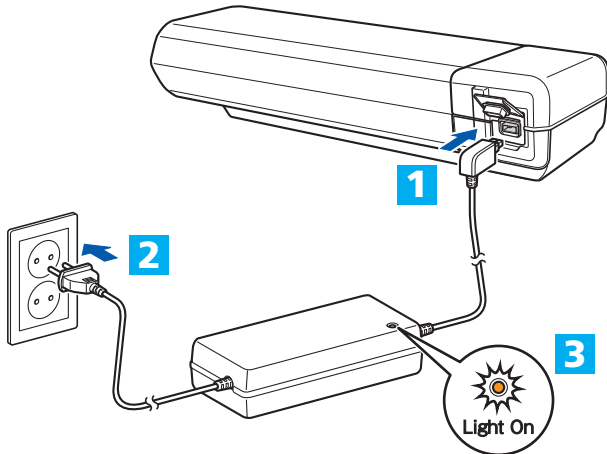


⚠ IMPORTANT NOTICE

For safety, be sure to read user's manual thoroughly before use, and follow them for correct use. Visit our website at si.shimano.com for the detailed and latest information.

1 Charging the battery.



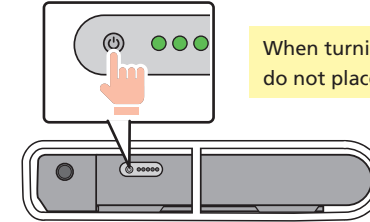
	Charging (Within 1 hour after the completion of charging)
	Charging error

It is possible to charge the battery even while it is mounted on the bicycle. See user manual for detailed.

2 Turn on the power.



OR



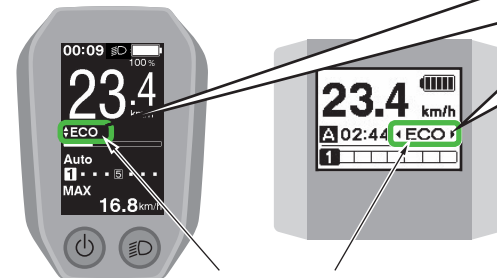
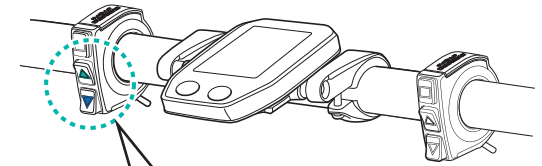
When turning the power ON, do not place your foot on the pedal.

3 Ride a bike.

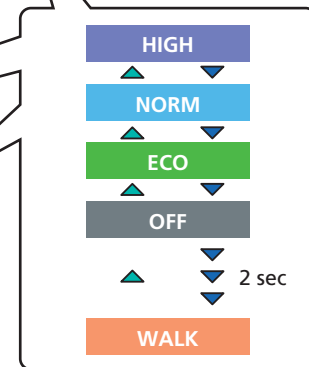
Assistance will start when the pedals start turning.



4 Select your preferred assist mode.



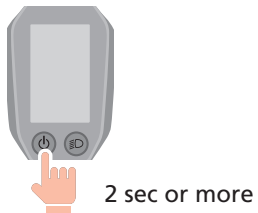
Current assist mode



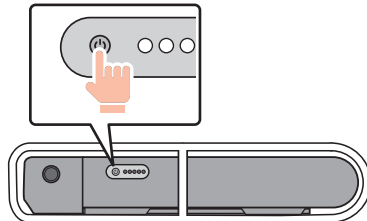
Assist-Y

Assist-Z

5 Turn off the power.



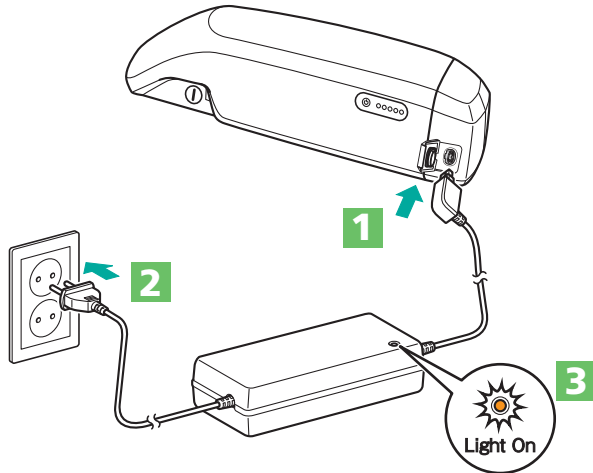
OR



⚠ IMPORTANT NOTICE

For safety, be sure to read user's manual thoroughly before use, and follow them for correct use. Visit our website at si.shimano.com for the detailed and latest information.

1 Charging the battery.



	Charging (Within 1 hour after the completion of charging)
	Charging error

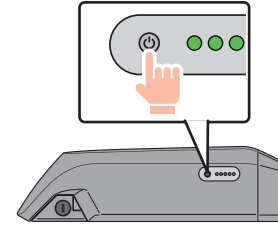
It is possible to charge the battery even while it is mounted on the bicycle. See user manual for detailed.

2 Turn on the power.

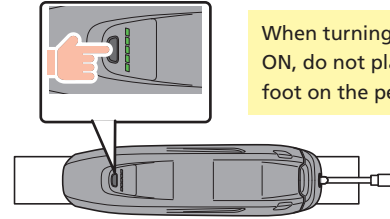


OR

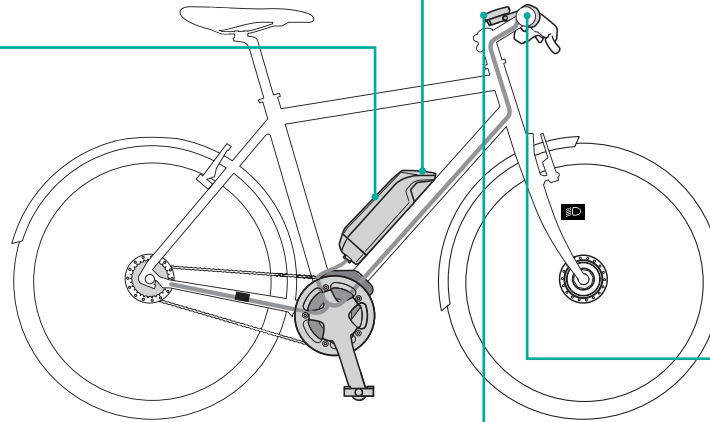
BT-E6010



BT-E8010



When turning the power ON, do not place your foot on the pedal.

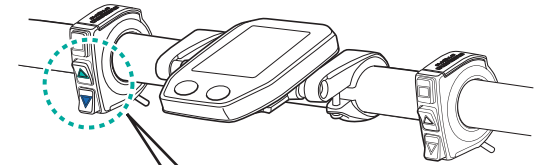


3 Ride a bike.

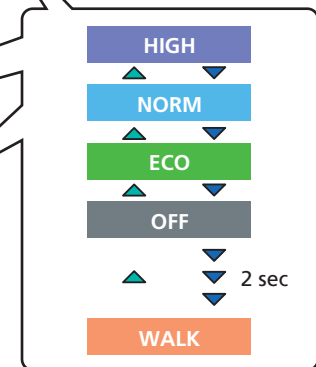
Assistance will start when the pedals start turning.



4 Select your preferred assist mode.



Current assist mode



Assist-Y

Assist-Z

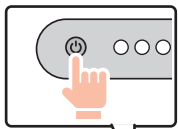
5 Turn off the power.



2 sec or more

OR

BT-E6010



BT-E8010

